

Gourmet Cube Ice Machine up to 170 Kg



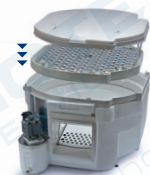
Proximity condenser air filter (AS version only)



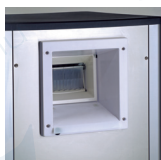
Front ON-OFF Switch



MC 16 "SHORT" with B 393 (sold separately)



Circular evaporator



Optional

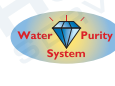


ABS plastic cover

Features

- Produces individual Gourmet crystal clear supercubes
- Up to 170 kg (374 lbs) daily ice cubes production
- ABS plastic top cover
- Dual ice discharge possibility: vertical ice-chute (standard) or side ice-chute (optional)
- "Universal Standard 30" width fits on most popular ice storage bins
- Resistant stainless steel exterior
- Computer controlled with advanced diagnostics capabilities
- Front access condenser air filter, removable and washable (air cooled version only)
- Easily accessible front panel mount ON-OFF Switch
- Routine Maintenance visible alarm light on front panel
- AgION antimicrobial agent embedded in moulded plastics parts
- CFC-free R-404 A Refrigerant
- 2 years manufacturer warranty

MC 16 "SHORT" Technologies



| | +C° -C° | 10°: 10°C | | 21°: 15°C | | D W H [WxDxH mm] 772x608x711 [WxDxH inches] 30 3/8"x23 15/16"x28" | | | |
|----------------------------|----------------|-----------|-------|-----------|-----|---|-------|---------------------------|-------------|
| | | [kg] | [lbs] | N° | *N° | | [kg] | [lbs] | N° |
| MC S 16 Short AS | | 170 | 375 | 21250 | 150 | 331 | 18750 | | |
| MC S 16 Short WS | | 172 | 379 | 21500 | 162 | 357 | 20250 | | |
| MC M 16 Short AS | | 170 | 375 | 8500 | 150 | 331 | 7500 | | |
| MC M 16 Short WS | | 172 | 379 | 8600 | 162 | 357 | 8100 | | |
| MC L 16 Short AS | | 153 | 337 | 3920 | 140 | 309 | 3590 | | |
| MC L 16 Short WS | | 155 | 341 | 3974 | 146 | 322 | 3744 | | |
| *Estimated number of cubes | | | | | | | | [v/Hz/ph] 230/50/1 | R 404 A |

This product qualifies for the following listings:



2 Years Warranty

Subject to certain limitations and exclusions

Small Gourmet
8 g



25,5 x mm 22,5 mm x 21 mm
1" x 14/16" x 13/16"

Medium Gourmet
20 g



34,5 mm x 30,5 mm x 29,5 mm
1 6/16" x 1 3/16" x 1 3/16"

Large Gourmet
39 g



41,5 mm x 38 mm x 35 mm
1 10/16" x 1 8/16" x 1 6/16"

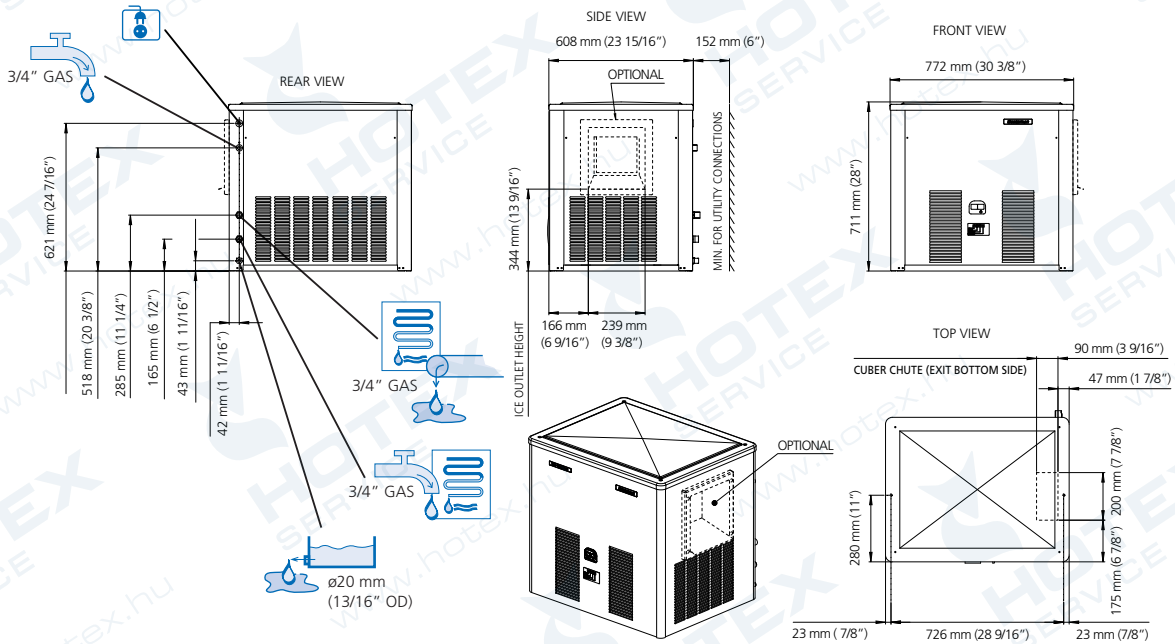
Certified ISO 9001:2000

www.scotsman-ice.com
www.scotsman-ice.it

Models and specifications are subject to change without notice.

Other models in this range:
MC 46 - MC 1210

Gourmet Cube Ice Machine up to 170 Kg



MC 16 SHORT AIR COOLED

| °C | °F | | | | kg |
|-----|-----|-----|-----|-----|-----|
| | 50° | 60° | 70° | 90° | |
| 10° | 170 | 164 | 158 | 146 | kg |
| 50° | 374 | 362 | 348 | 322 | lbs |
| 21° | 156 | 150 | 144 | 132 | kg |
| 70° | 344 | 331 | 317 | 291 | lbs |
| 32° | 134 | 128 | 122 | 110 | kg |
| 90° | 295 | 282 | 269 | 242 | lbs |
| 38° | 122 | 116 | 110 | 98 | kg |
| 100 | 269 | 256 | 242 | 216 | lbs |

MC 16 SHORT WATER COOLED

| °C | °F | | | | kg |
|-----|-----|-----|-----|-----|-----|
| | 50° | 60° | 70° | 90° | |
| 10° | 172 | 165 | 158 | 144 | kg |
| 50° | 379 | 363 | 348 | 317 | lbs |
| 21° | 169 | 162 | 155 | 141 | kg |
| 70° | 372 | 357 | 341 | 311 | lbs |
| 32° | 167 | 160 | 153 | 139 | kg |
| 90° | 368 | 352 | 337 | 306 | lbs |
| 38° | 164 | 157 | 150 | 136 | kg |
| 100 | 362 | 346 | 330 | 299 | lbs |

| Minimum | Maximum |
|-----------------|-----------------|
| 10°C (50°F) | 40°C (104°F) |
| 5°C (41°F) | 35°C (95°F) |
| -10% | +10% |
| 1 BAR 14 psi | 5 BAR 70 psi |

| | Compressor | Capacity | Ice Size | Power | FUSE | Energy | Production | Storage | Weight |
|------------------|------------|------------------------|----------------------|----------|------|----------------------|----------------------|-------------------|-------------------|
| MC S 16 Short AS | AS | 13160 3860 [Btu/h] [W] | 3x1.5 - 5x1.5 [Ømm²] | 1450 [W] | 20 A | 22,75 [kWh] - 100 Kg | 17 [l/h] 4,5 [gal/h] | 75 [kg] 165 [lbs] | 85 [kg] 187 [lbs] |
| MC S 16 Short WS | WS | 13160 3860 | 3x1.5 - 5x1.5 | 1000 | 20 A | 18,2 | 137,5 36,3 | 74 163 | 84 185 |
| MC M 16 Short AS | AS | 13160 3860 | 3x1.5 - 5x1.5 | 1300 | 20 A | 22,3 | 15,8 4,2 | 75 165 | 85 187 |
| MC M 16 Short WS | WS | 13160 3860 | 3x1.5 - 5x1.5 | 1000 | 20 A | 16,3 | 131,5 34,7 | 74 163 | 84 185 |
| MC L 16 Short AS | AS | 13160 3860 | 3x1.5 - 5x1.5 | 1450 | 20 A | 21,5 | 13,3 3,5 | 75 165 | 85 187 |
| MC L 16 Short WS | WS | 13160 3860 | 3x1.5 - 5x1.5 | 1000 | 20 A | 16,5 | 116 30,6 | 74 163 | 84 185 |

CONTACT POINTS:

Europe
Scotsman Europe-Frimont S.p.A.
Via Puccini, 22
20010 Pogliano (Milano) Italy
Ph: (+39) 02-93960208
Fax: (+39) 02-93960201
scotsman.europe@frimont.it

Asia and Pacific
Scotsman Ice Systems-Frimont S.p.A. (R.O.)
627A Aljunied Road#04-04 Biztech Centre
Singapore 389842
Ph: (+65) 6738 5393
Fax: (+65) 6738 1959
scotsice@singnet.com.sg

China
Scotsman Ice Systems (Shanghai)
Room 2503, Building 2
20 Xuhong Middle Road, Xuhui District
Shanghai China 200235
Main line: (+86) 21 61313200
Fax: (+86) 21 61313330
scotsman.shanghai@scotsman-china.com

Middle East & N. Africa
Scotsman-Frimont Regional Office (MENA)
POBox: 42026, HFZA Sharjah, UAE
Ph: (+97)16 5262 944-16 5262 945
Fax: (+97)16 5262 946-Cell:1 505 505 980
Skype: mdawood331393
m.dawood@frimont.ae
scotsman@frimont.ae-scotice@frimont.ae

South Africa
SCOTSMAN Ice Systems SA Pty. Ltd
No. 4, Lakovlov Business Park
8-10 Yaldwyn Road - Jet Park
P.O. Box 44 - Riverclub 2149
Ph: (+27)111 789 8400-11 789 8914
Fax: (+27)11 789 8411
scotsman@telkomsa.net

Spain
Scotsman España, S.L.U. c/ Galapagar, 12
Poligono Industrial Ventorro del Cano
28925 Alcorcon (Madrid)
Ph: (+34)91-1109796
Fax: (+34)91-6337423
scotsman@scotsman-espana.es
www.scotsman-espana.es